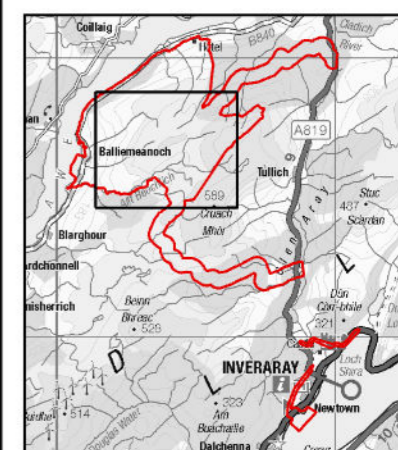


**PROJECT**  
**BALLIEMEANOCH**  
**PUMPED STORAGE**  
**HYDRO**  
**CLIENT**  
 ILI (Borders PSH) Ltd.

**CONSULTANT**  
 AECOM Limited  
 177 Bothwell Street  
 Glasgow G2 7ER  
 www.aecom.com

- LEGEND**
- Development Site
  - Development Boundary
  - Above Ground Infrastructure
  - Below Ground Infrastructure
  - 100 m Buffer on Above Ground Infrastructure
  - Survey Area
  - Pine marten evidence
  - + Droppings



**NOTES**

Reproduced from Ordnance Survey digital map data © Crown copyright 2024. All rights reserved. Licence number 0100031673.

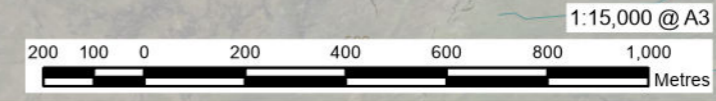
© 2024 Microsoft Corporation © 2024 Maxar ©CNES (2024) Distribution Airbus DS

**ISSUE PURPOSE**  
 DRAFT

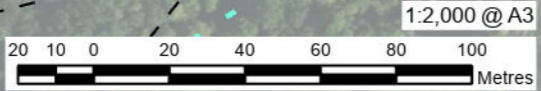
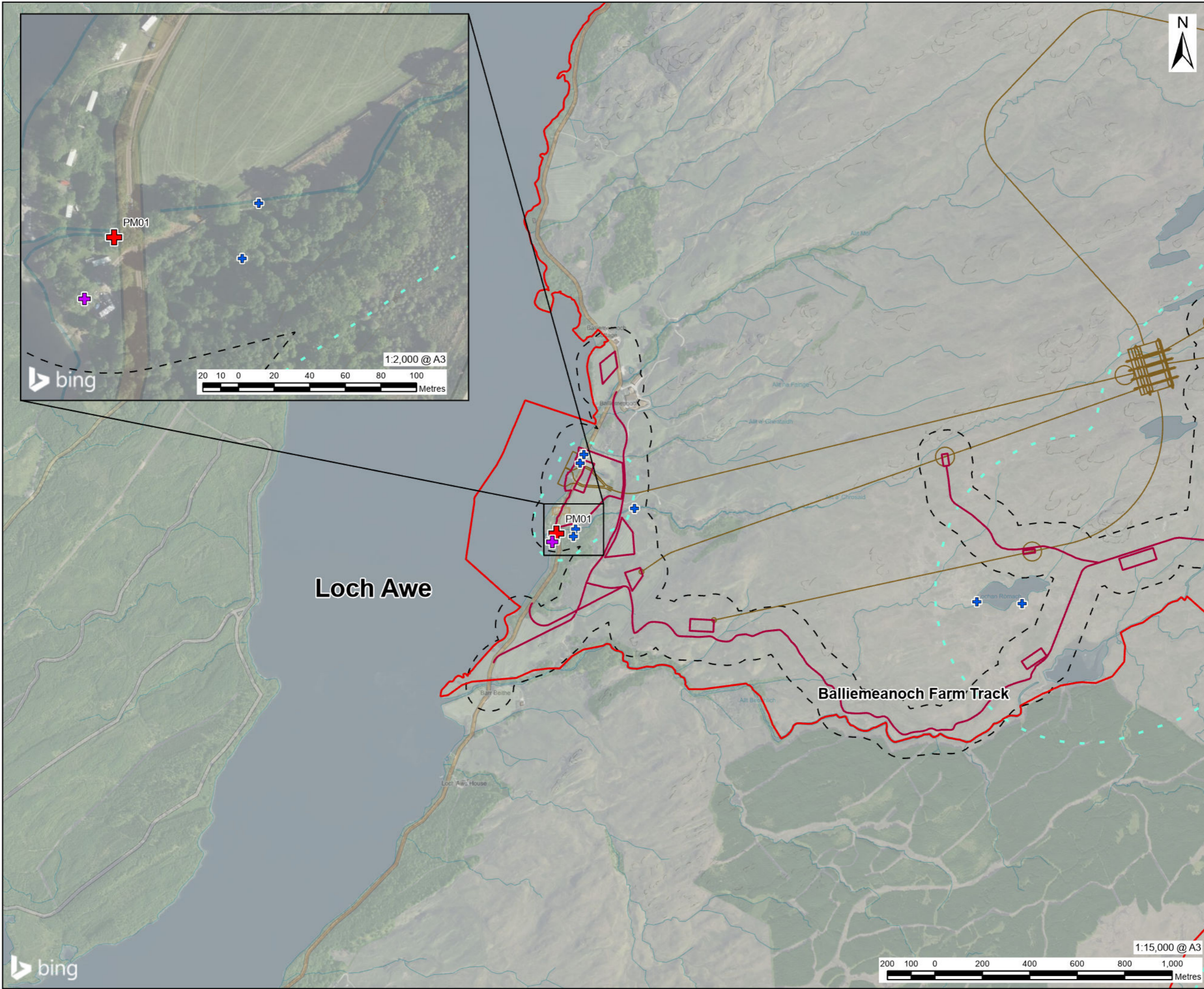
**PROJECT NUMBER**  
 60570241

**FIGURE TITLE**  
 Badger, Pine Martin and Red Squirrel Survey Results and Incidental Records

**FIGURE NUMBER**  
 Figure 6.10 (Sheet 1 of 6)



This drawing has been prepared for the use of AECOM's client. It may not be used, modified, reproduced or relied upon by third parties, except as agreed by AECOM or as required by law. AECOM accepts no responsibility, and denies any liability whatsoever, to any party that uses or relies on this drawing without AECOM's express written consent. Do not scale this document. All measurements must be obtained from the stated dimensions.



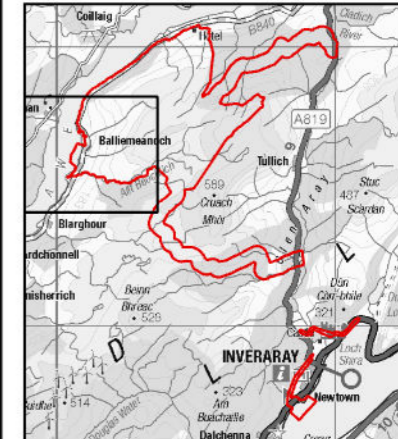
# AECOM

**PROJECT**  
**BALLIEMEANOCH**  
**PUMPED STORAGE**  
**HYDRO**

**CLIENT**  
 ILI (Borders PSH) Ltd.

**CONSULTANT**  
 AECOM Limited  
 177 Bothwell Street  
 Glasgow G2 7ER  
 www.aecom.com

- LEGEND**
- Development Site
  - Development Boundary
  - Above Ground Infrastructure
  - Below Ground Infrastructure
  - 100 m Buffer on Above Ground Infrastructure
  - Infrastructure
  - + Survey Area
  - Pine marten evidence
    - + Den
    - + Pine Marten Live
    - + Droppings



**NOTES**

Reproduced from Ordnance Survey digital map data © Crown copyright 2024. All rights reserved. Licence number 0100031673.

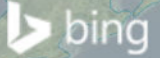
© 2024 Microsoft Corporation © 2024 Maxar ©CNES (2024) Distribution Airbus DS

**ISSUE PURPOSE**  
 DRAFT

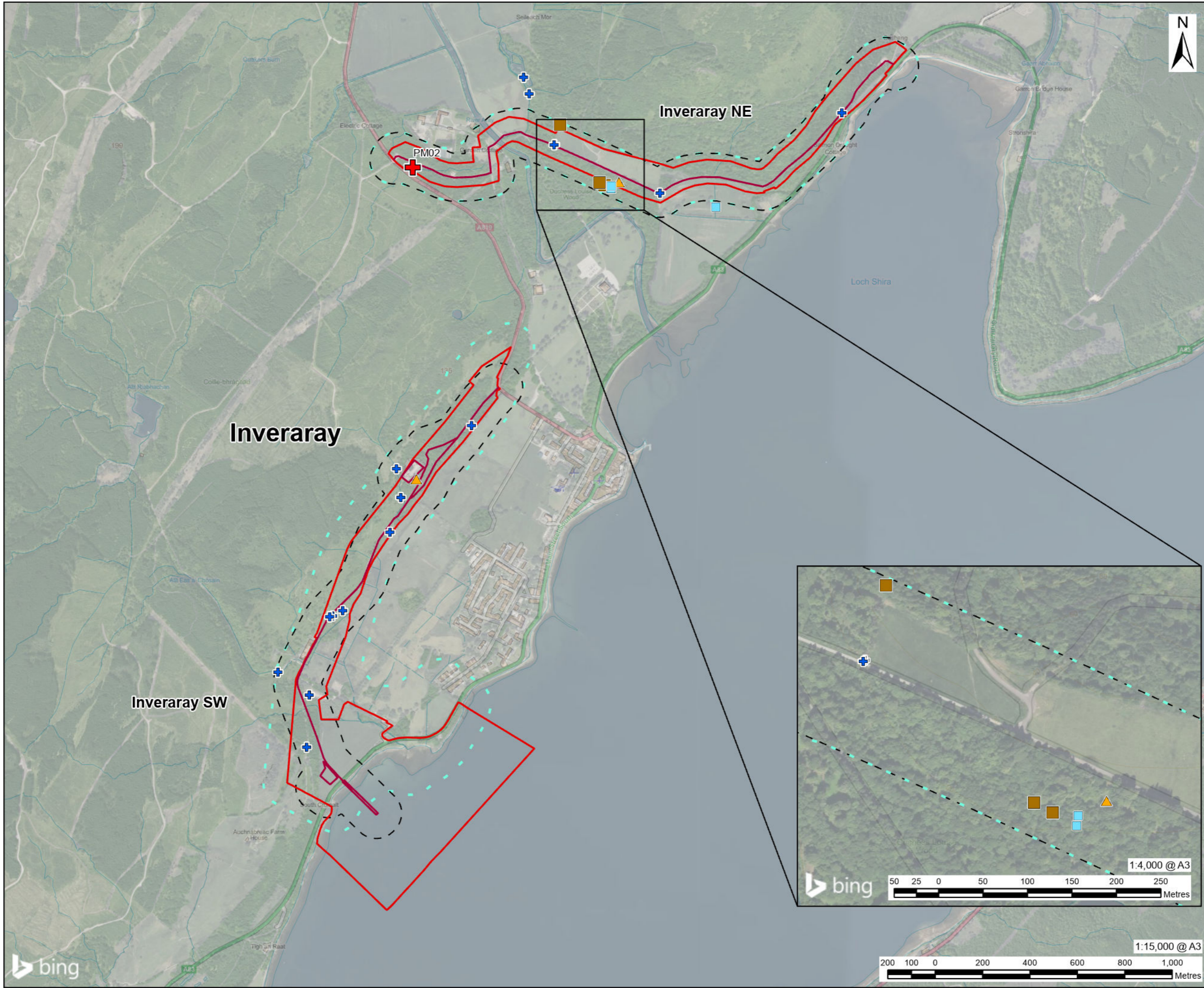
**PROJECT NUMBER**  
 60570241

**FIGURE TITLE**  
 Badger, Pine Martin and Red Squirrel Survey Results and Incidental Records

**FIGURE NUMBER**  
 Figure 6.10 (Sheet 2 of 6)



This drawing has been prepared for the use of AECOM's client. It may not be used, modified, reproduced or relied upon by third parties, except as agreed by AECOM or as required by law. AECOM accepts no responsibility, and denies any liability whatsoever, to any party that uses or relies on this drawing without AECOM's express written consent. Do not scale this document. All measurements must be obtained from the stated dimensions.

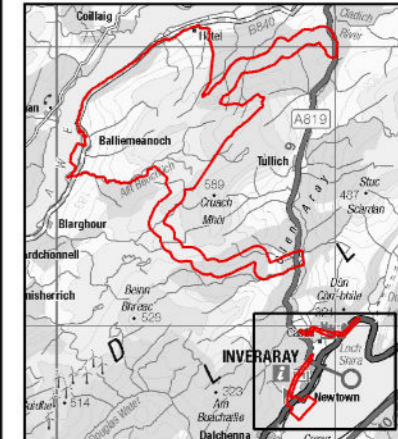


# AECOM

**PROJECT**  
**BALLIEMEANOCH**  
**PUMPED STORAGE**  
**HYDRO**  
**CLIENT**  
 ILI (Borders PSH) Ltd.

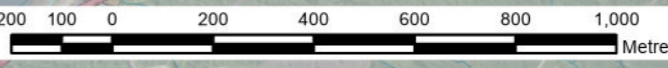
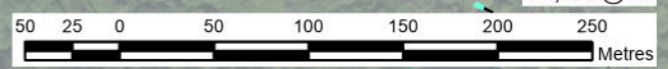
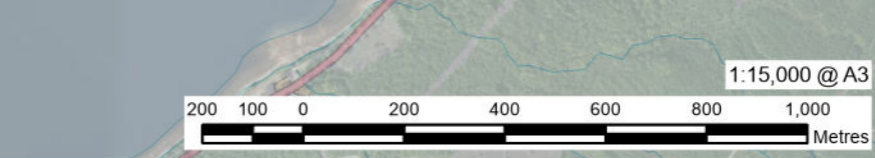
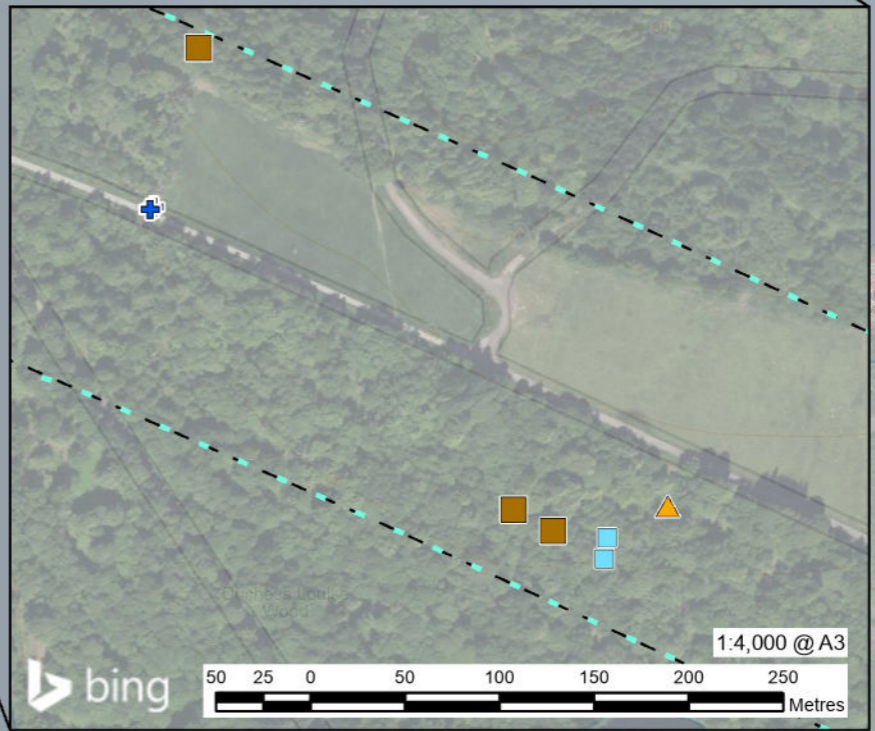
**CONSULTANT**  
 AECOM Limited  
 177 Bothwell Street  
 Glasgow G2 7ER  
 www.aecom.com

- LEGEND**
- Development Site
  - Development Boundary
  - Above Ground Infrastructure
  - Below Ground Infrastructure
  - 100 m Buffer on Above Ground Infrastructure
  - Survey Area
  - Badger Evidence
    - Latrine
    - Snuffle Hole
  - Pine marten evidence
    - Den
    - Droppings
  - Red Squirrel
    - Red Squirrel Sighting

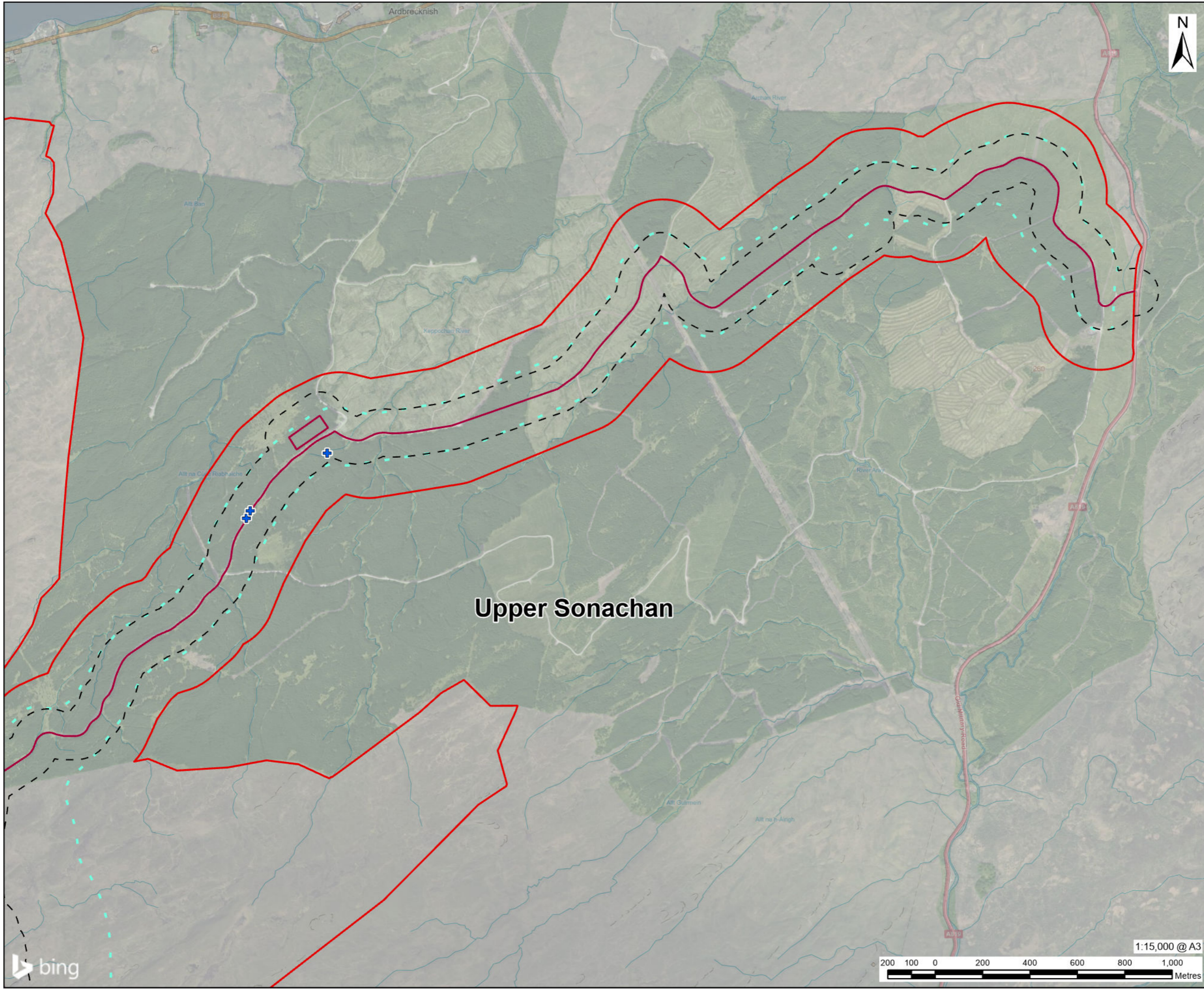


**NOTES**  
 Reproduced from Ordnance Survey digital map data © Crown copyright 2024. All rights reserved. Licence number 0100031673.  
 © 2024 Microsoft Corporation © 2024 Maxar ©CNES (2024) Distribution Airbus DS

**ISSUE PURPOSE**  
 DRAFT  
**PROJECT NUMBER**  
 60570241  
**FIGURE TITLE**  
 Badger, Pine Martin and Red Squirrel Survey Results and Incidental Records  
**FIGURE NUMBER**  
 Figure 6.10 (Sheet 3 of 6)



This drawing has been prepared for the use of AECOM's client. It may not be used, modified, reproduced or relied upon by third parties, except as agreed by AECOM or as required by law. AECOM accepts no responsibility, and denies any liability whatsoever, to any party that uses or relies on this drawing without AECOM's express written consent. Do not scale this document. All measurements must be obtained from the stated dimensions.



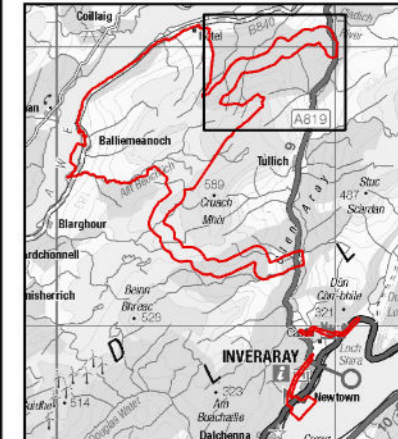
# AECOM

**PROJECT**  
 BALLIEMEANOCH  
 PUMPED STORAGE  
 HYDRO

**CLIENT**  
 ILI (Borders PSH) Ltd.

**CONSULTANT**  
 AECOM Limited  
 177 Bothwell Street  
 Glasgow G2 7ER  
 www.aecom.com

- LEGEND**
- Development Site
  - Development Boundary
  - Above Ground Infrastructure
  - Below Ground Infrastructure
  - 100 m Buffer on Above Ground Infrastructure
  - Survey Area
  - Pine marten evidence
  - + Droppings



## Upper Sonachan

**NOTES**

Reproduced from Ordnance Survey digital map data © Crown copyright 2024. All rights reserved. Licence number 0100031673.

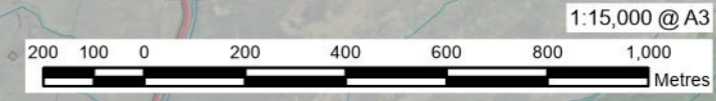
© 2024 Microsoft Corporation © 2024 Maxar ©CNES (2024) Distribution Airbus DS

**ISSUE PURPOSE**  
 DRAFT

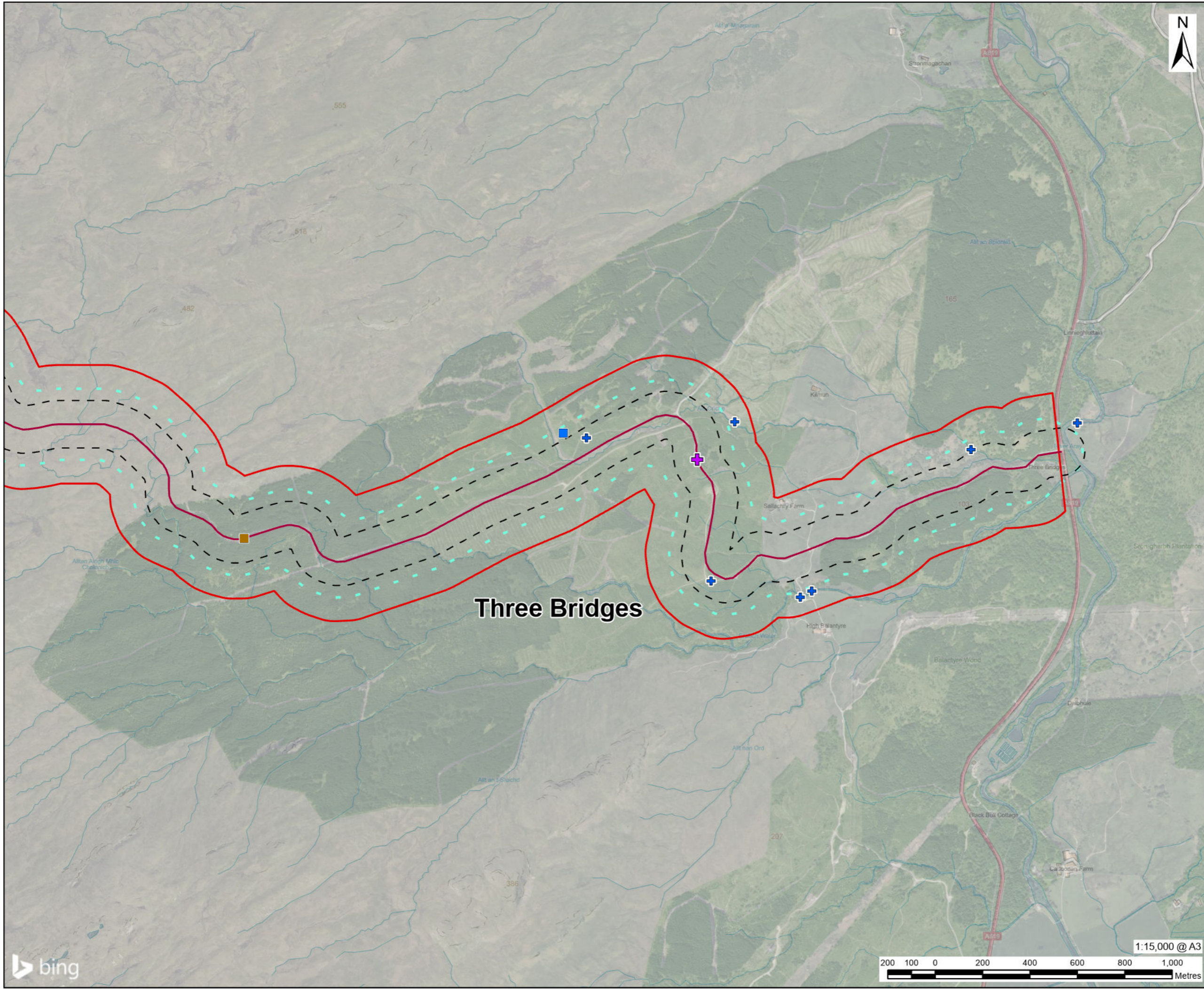
**PROJECT NUMBER**  
 60570241

**FIGURE TITLE**  
 Badger, Pine Martin and Red Squirrel Survey Results and Incidental Records

**FIGURE NUMBER**  
 Figure 6.10 (Sheet 4 of 6)



This drawing has been prepared for the use of AECOM's client. It may not be used, modified, reproduced or relied upon by third parties, except as agreed by AECOM or as required by law. AECOM accepts no responsibility, and denies any liability whatsoever, to any party that uses or relies on this drawing without AECOM's express written consent. Do not scale this document. All measurements must be obtained from the stated dimensions.



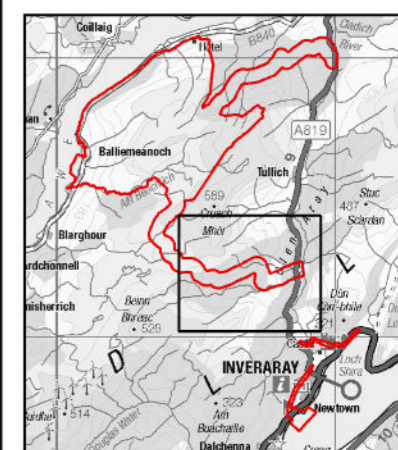
# AECOM

**PROJECT**  
**BALLIEMEANOCH**  
**PUMPED STORAGE**  
**HYDRO**

**CLIENT**  
 ILI (Borders PSH) Ltd.

**CONSULTANT**  
 AECOM Limited  
 177 Bothwell Street  
 Glasgow G2 7ER  
 www.aecom.com

- LEGEND**
- Development Site
  - Development Boundary
  - Above Ground Infrastructure
  - Below Ground Infrastructure
  - 100 m Buffer on Above Ground Infrastructure
  - Infrastructure
  - Survey Area
  - Badger Evidence
  - Single Dung
  - Foraged Bee Nest
  - Pine marten evidence
  - Pine Marten Live
  - Droppings



**NOTES**

Reproduced from Ordnance Survey digital map data © Crown copyright 2024. All rights reserved. Licence number 0100031673.

© 2024 Microsoft Corporation © 2024 Maxar ©CNES (2024) Distribution Airbus DS

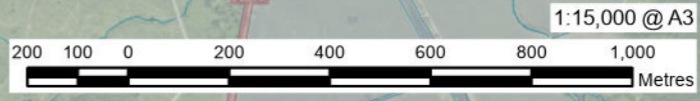
**ISSUE PURPOSE**  
 DRAFT

**PROJECT NUMBER**  
 60570241

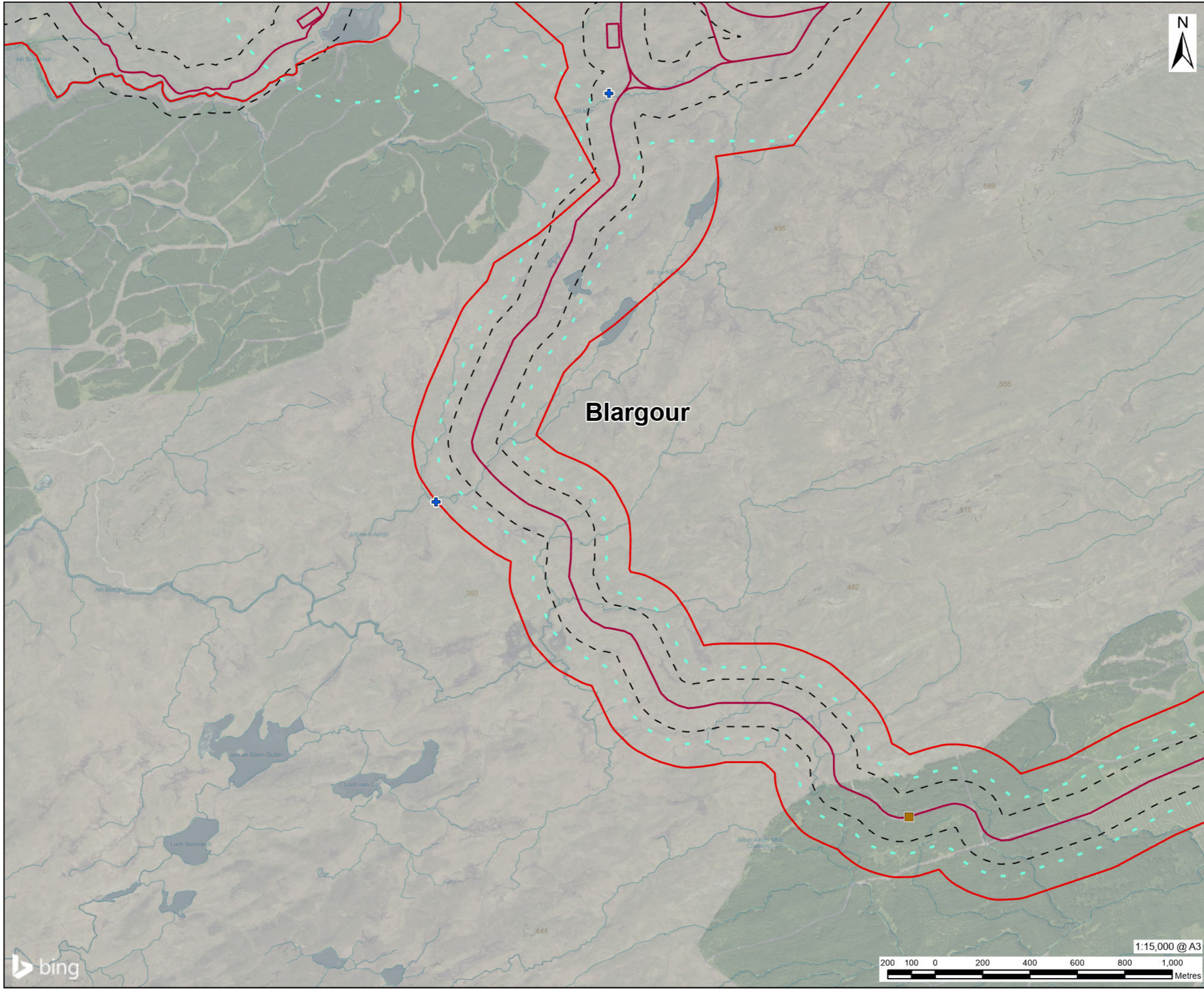
**FIGURE TITLE**  
 Badger, Pine Martin and Red Squirrel Survey Results and Incidental Records

**FIGURE NUMBER**  
 Figure 6.10 (Sheet 5 of 6)

**Three Bridges**



This drawing has been prepared for the use of AECOM's client. It may not be used, modified, reproduced or relied upon by third parties, except as agreed by AECOM or as required by law. AECOM accepts no responsibility, and denies any liability whatsoever, to any party that uses or relies on this drawing without AECOM's express written consent. Do not scale this document. All measurements must be obtained from the stated dimensions.



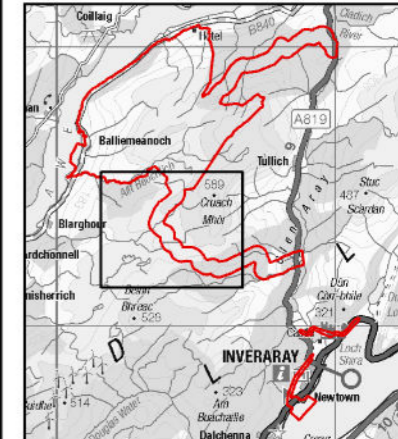
# AECOM

**PROJECT**  
**BALLIEMEANOCH**  
**PUMPED STORAGE**  
**HYDRO**

**CLIENT**  
 ILI (Borders PSH) Ltd.

**CONSULTANT**  
 AECOM Limited  
 177 Bothwell Street  
 Glasgow G2 7ER  
 www.aecom.com

- LEGEND**
- Development Site
  - Development Boundary
  - Above Ground Infrastructure
  - Below Ground Infrastructure
  - 100 m Buffer on Above Ground Infrastructure
  - Infrastructure
  - Survey Area
  - Badger Evidence
  - Single Dung
  - Pine marten evidence
  - + Droppings
  - Red Squirrel
  - ▲ Red Squirrel Sighting



**NOTES**

Reproduced from Ordnance Survey digital map data © Crown copyright 2024. All rights reserved. Licence number 0100031673.

© 2024 Microsoft Corporation © 2024 Maxar ©CNES (2024) Distribution Airbus DS

**ISSUE PURPOSE**  
 DRAFT

**PROJECT NUMBER**  
 60570241

**FIGURE TITLE**  
 Badger, Pine Martin and Red Squirrel Survey Results and Incidental Records

**FIGURE NUMBER**  
 Figure 6.10 (Sheet 6 of 6)



This drawing has been prepared for the use of AECOM's client. It may not be used, modified, reproduced or relied upon by third parties, except as agreed by AECOM or as required by law. AECOM accepts no responsibility, and denies any liability whatsoever, to any party that uses or relies on this drawing without AECOM's express written consent. Do not scale this document. All measurements must be obtained from the stated dimensions.